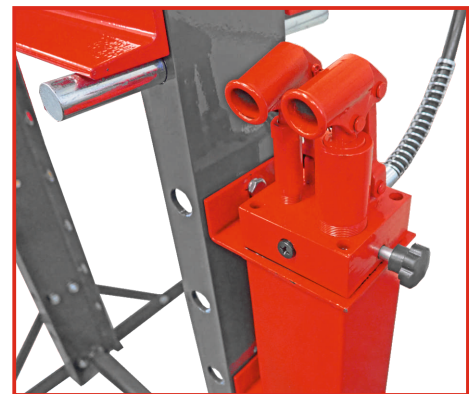
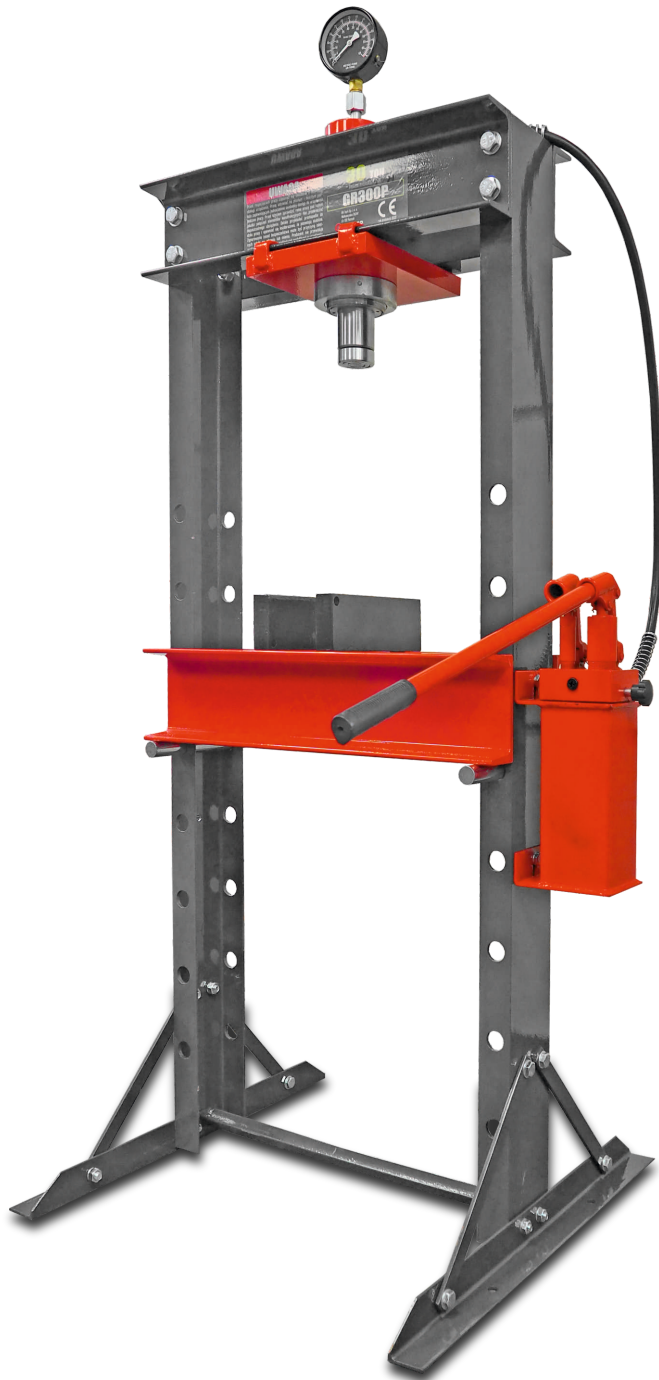


GR300P

FORCE:	30000 kg
CYLINDER STROKE:	200 mm
WORKING RANGE :	840 mm
WEIGHT:	126 kg



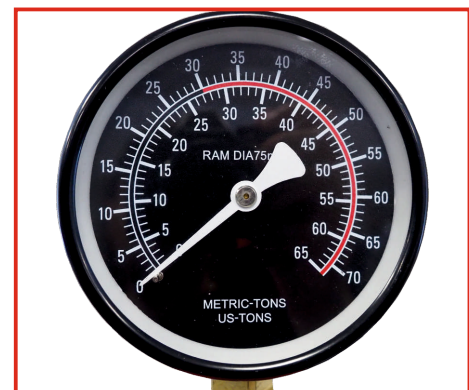
TWO-STAGE HYDRAULIC PUMP



**POWERFUL CYLINDER WITH 200mm
PISTON STROKE**



INCLUDES 2 BLOCKS FOR THE WORKTOP



CLEAR GAUGE